

Scissortail Laboratory, LLC

OBNDD No: 62043 (405) 788-0247 2408 NW 10th St. OKC, OK 73107

JJA Formulation
PAAA-VKVZ-S3KA

Received On: 2/14/2020
Reported On: 2/21/2020

Sample: Crisp Mint
Matrix: Edible
STL Number: 1833-03
Batch Number: CM2003108
Harvest/Process Date: N/A



Potency

Ref. Method(s): J AOAC 2015 V98-6
QUECHERS

Extraction Date: 2/17/2020

Mass Extracted (g): 0.5109

Final Volume (mL): 10

	mg/L	Dilution Factor	Conc. In Sample (mg/g)	Potency %	LOQ (%)	Analytical Date	Analyst
CBDV	2.484	1	0.04862	0.00486	0.0020	2/18/2020	ZDR
CBDA	0	1	0.00000	0.00000	0.0020	2/18/2020	ZDR
CBGA	0	1	0.00000	0.00000	0.0020	2/18/2020	ZDR
CBG	2.443	1	0.04782	0.00478	0.0020	2/18/2020	ZDR
CBD	68.659	10	13.43883	1.34388	0.0196	2/18/2020	ZDR
THCV	0	1	0.00000	0.00000	0.0020	2/18/2020	ZDR
CBN	14.171	1	0.27737	0.02774	0.0020	2/18/2020	ZDR
d9-THC	25.706	1	0.50315	0.05032	0.0020	2/18/2020	ZDR
d8-THC	0	1	0.00000	0.00000	0.0020	2/18/2020	ZDR
CBC	1.594	1	0.03120	0.00312	0.0020	2/18/2020	ZDR
THCA	0	1	0.00000	0.00000	0.0020	2/18/2020	ZDR

Total THC: 0.05 %
Total CBD: 1.34 %

1 unit of 20 mints	6.965	g
mg d9-THC per 1 unit of 20 mints	3.50	mg Delta 9
mg CBD per 1 unit of 20 mints	93.60	mg CBD


Contaminants and Filth

Analytical Date: 2/14/2020

Reference Method: FDA Proc from Microanalytical Procedures Manual
Section V-8, Subsection 4

Result: Pass

These samples were run in accordance with current ISO 17025 standards.

Approved By: 

All associated batch QC passed within acceptable limits.

Total THC is calculated as [(THCA x 0.8770) + d9-THC]. Total CBD is calculated as [(CBDA x 0.8770) + CBD].

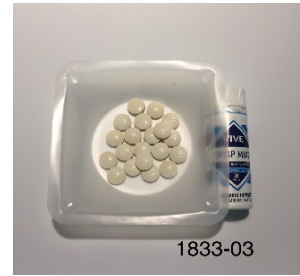
Scissortail Laboratory, LLC

OBNDD No: 62043 (405) 788-0247 2408 NW 10th St. OKC,OK 73107

JJA Formulation
PAAA-VKVZ-S3KA

Received On: 2/14/2020
Reported On: 2/21/2020

Sample: Crisp Mint
Matrix: Edible
STL Number: 1833-03
Batch Number: CM2003108
Harvest/Process Date: N/A



Terpenes

Ref. Method(s): J AOAC 2015 V98-6

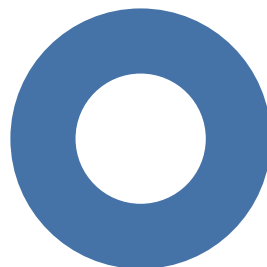
Mass Extracted (g): 0.0219

Shimadzu Scientific Whitepaper: GCMS-1604

Agilent Technologies App Note: 5991-8499EN


	From Instrument (ug/g)	ug on column (10uL)	wt %	PQL (%)	Analytical Date	Analyst
.alpha.-Pinene	0.00	0.00	0.000	0.00178	2/18/2020	ZDR
Camphene	0.00	0.00	0.000	0.00178	2/18/2020	ZDR
.beta.-Myrcene	0.00	0.00	0.000	0.00178	2/18/2020	ZDR
.beta.-Pinene	0.00	0.00	0.000	0.00178	2/18/2020	ZDR
3-Carene	0.00	0.00	0.000	0.00178	2/18/2020	ZDR
Alpha Terpinene	0.00	0.00	0.000	0.00178	2/18/2020	ZDR
D-Limonene	0.00	0.00	0.000	0.00178	2/18/2020	ZDR
p-Cymene	0.00	0.00	0.000	0.00178	2/18/2020	ZDR
.beta.-Ocimene	0.00	0.00	0.000	0.00178	2/18/2020	ZDR
Eucalyptol	47.57	0.22	0.002	0.00178	2/18/2020	ZDR
.gamma.-Terpinene	0.00	0.00	0.000	0.00178	2/18/2020	ZDR
Terpinolene	0.00	0.00	0.000	0.00178	2/18/2020	ZDR
Linalool	0.00	0.00	0.000	0.00178	2/18/2020	ZDR
Isopulegol	0.00	0.00	0.000	0.00178	2/18/2020	ZDR
Geraniol	0.00	0.00	0.000	0.00178	2/18/2020	ZDR
Caryophyllene	0.00	0.00	0.000	0.00178	2/18/2020	ZDR
Humulene	0.00	0.00	0.000	0.00178	2/18/2020	ZDR
Nerolidol cis	0.00	0.00	0.000	0.00178	2/18/2020	ZDR
Nerolidol trans	0.00	0.00	0.000	0.00178	2/18/2020	ZDR
Guaiol	0.00	0.00	0.000	0.00178	2/18/2020	ZDR
Caryophyllene oxide	0.00	0.00	0.000	0.00178	2/18/2020	ZDR
.alpha.-Bisabolol	0.00	0.00	0.000	0.00178	2/18/2020	ZDR

Percent Terpenes by wt: 0.002



- Eucalyptol
- Camphene
- .beta.-Pinene
- All Other Terpenes
- .alpha.-Pinene
- .beta.-Myrcene
- 3-Carene

These samples were run in accordance with current ISO 17025 standards.
All associated batch QC passed within acceptable limits.

Approved By: 
Lab Director