

Scissortail Laboratory, LLC

OBNDD No: 62043 (405) 788-0247 2408 NW 10th St. OKC, OK 73107

JJA Formulation
PAAA-VKVZ-S3KA

Received On: 2/14/2020
Reported On: 2/21/2020

Sample: White Hot Cinnamon
Matrix: Edible
STL Number: 1833-05
Batch Number: WC2003612
Harvest/Process Date: N/A



Potency

Ref. Method(s): J AOAC 2015 V98-6
QUECHERS

Extraction Date: 2/17/2020

Mass Extracted (g): 0.5071

Final Volume (mL): 10

	mg/L	Dilution Factor	Conc. In Sample (mg/g)	Potency %	LOQ (%)	Analytical Date	Analyst
CBDV	0	1	0.00000	0.00000	0.0020	2/18/2020	ZDR
CBDA	1.157	1	0.02282	0.00228	0.0020	2/18/2020	ZDR
CBGA	2.043	1	0.04029	0.00403	0.0020	2/18/2020	ZDR
CBG	24.599	1	0.48509	0.04851	0.0020	2/18/2020	ZDR
CBD	3.262	1	0.06433	0.00643	0.0020	2/18/2020	ZDR
THCV	7.243	1	0.14283	0.01428	0.0020	2/18/2020	ZDR
CBN	62.826	1	1.23893	0.12389	0.0020	2/18/2020	ZDR
d9-THC	74.596	10	14.71031	1.47103	0.0197	2/18/2020	ZDR
d8-THC	0	1	0.00000	0.00000	0.0020	2/18/2020	ZDR
CBC	12.728	1	0.25100	0.02510	0.0020	2/18/2020	ZDR
THCA	4.994	1	0.09848	0.00985	0.0020	2/18/2020	ZDR

Total THC: 1.48 %
Total CBD: 0.01 %

1 unit of 20 mints	6.938	g
mg d9-THC per 1 unit of 20 mints	102.06	mg Delta 9
mg CBD per 1 unit of 20 mints	0.45	mg CBD


Contaminants and Filth

Analytical Date: 2/14/2020

Reference Method: FDA Proc from Microanalytical Procedures Manual
Section V-8, Subsection 4

Result: Pass

These samples were run in accordance with current ISO 17025 standards.

Approved By: 

All associated batch QC passed within acceptable limits.

Total THC is calculated as [(THCA x 0.8770) + d9-THC]. Total CBD is calculated as [(CBDA x 0.8770) + CBD].

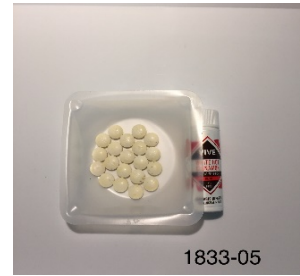
Scissortail Laboratory, LLC

OBNDD No: 62043 (405) 788-0247 2408 NW 10th St. OKC,OK 73107

JJA Formulation
PAAA-VKVZ-S3KA

Received On: 2/14/2020
Reported On: 2/21/2020

Sample: White Hot Cinnamon
Matrix: Edible
STL Number: 1833-05
Batch Number: WC2003612
Harvest/Process Date: N/A



Terpenes

Ref. Method(s): J AOAC 2015 V98-6

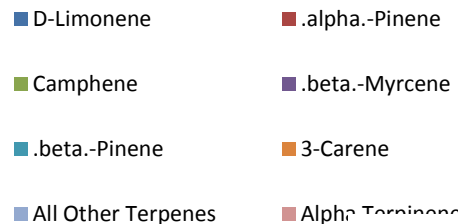
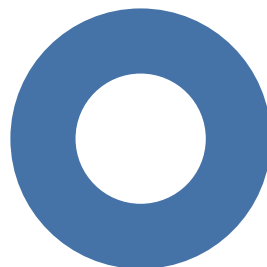
Mass Extracted (g): 0.0219

Shimadzu Scientific Whitepaper: GCMS-1604

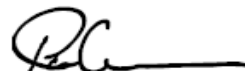
Agilent Technologies App Note: 5991-8499EN

	From Instrument (ug/g)	ug on column (10uL)	wt %	PQL (%)	Analytical Date	Analyst
.alpha.-Pinene	0.00	0.00	0.000	0.00178	2/18/2020	ZDR
Camphene	0.00	0.00	0.000	0.00178	2/18/2020	ZDR
.beta.-Myrcene	0.00	0.00	0.000	0.00178	2/18/2020	ZDR
.beta.-Pinene	0.00	0.00	0.000	0.00178	2/18/2020	ZDR
3-Carene	0.00	0.00	0.000	0.00178	2/18/2020	ZDR
Alpha Terpinene	0.00	0.00	0.000	0.00178	2/18/2020	ZDR
D-Limonene	60.54	0.28	0.003	0.00178	2/18/2020	ZDR
p-Cymene	0.00	0.00	0.000	0.00178	2/18/2020	ZDR
.beta.-Ocimene	0.00	0.00	0.000	0.00178	2/18/2020	ZDR
Eucalyptol	0.00	0.00	0.000	0.00178	2/18/2020	ZDR
.gamma.-Terpinene	0.00	0.00	0.000	0.00178	2/18/2020	ZDR
Terpinolene	0.00	0.00	0.000	0.00178	2/18/2020	ZDR
Linalool	0.00	0.00	0.000	0.00178	2/18/2020	ZDR
Isopulegol	0.00	0.00	0.000	0.00178	2/18/2020	ZDR
Geraniol	0.00	0.00	0.000	0.00178	2/18/2020	ZDR
Caryophyllene	0.00	0.00	0.000	0.00178	2/18/2020	ZDR
Humulene	0.00	0.00	0.000	0.00178	2/18/2020	ZDR
Nerolidol cis	0.00	0.00	0.000	0.00178	2/18/2020	ZDR
Nerolidol trans	0.00	0.00	0.000	0.00178	2/18/2020	ZDR
Guaiol	0.00	0.00	0.000	0.00178	2/18/2020	ZDR
Caryophyllene oxide	0.00	0.00	0.000	0.00178	2/18/2020	ZDR
.alpha.-Bisabolol	0.00	0.00	0.000	0.00178	2/18/2020	ZDR

Percent Terpenes by wt: 0.003



These samples were run in accordance with current ISO 17025 standards. All associated batch QC passed within acceptable limits.

Approved By: 
Lab Director